

# Europanel

## Product Data Sheet

### Table of Contents

|                              |   |
|------------------------------|---|
| Product Data Sheet .....     | 1 |
| Application .....            | 1 |
| Panel Properties.....        | 1 |
| Product Tolerances .....     | 1 |
| Thickness and Weights.....   | 1 |
| Standard Specification ..... | 2 |
| Technical Properties .....   | 2 |
| Thermal Performance .....    | 2 |
| Acoustic Performance .....   | 2 |
| Fire Performance .....       | 2 |



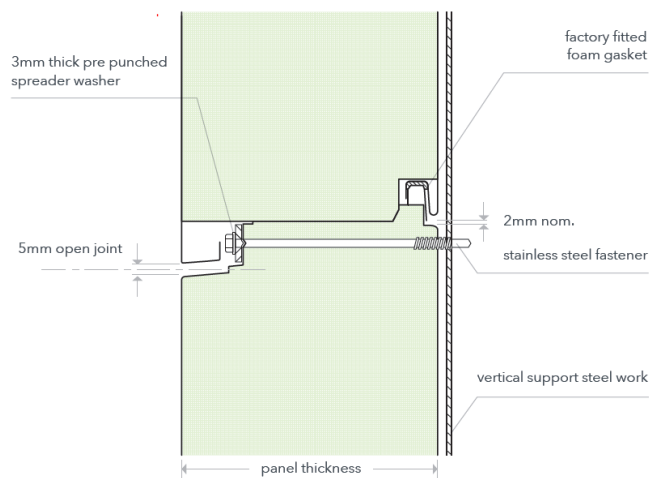


# Product Data Sheet

Europanel S5, F5, S5 Extra, F5 Extra and G12 – External Wall Panel Solution (Secret Fixed)

## Application

The Europanel® system is Eurobond’s flagship architectural product. Designed with a secret fix application. It has been developed as a ‘total external wall’ solution with ‘built in’ passive fire resistance due to its stone wool core. Modular flexibility in 1mm increments provides greater freedom for architectural expression. Standard horizontal 5mm shadow line joints (F5, S5, F5 Extra, S5 Extra) can be further expressed with the addition of a bold black EPDM gasket to create a 12mm joint and to give the impression of a wider uniform frame around the panel (G12). The panel can be finished with an external Satin Line (Micro rib) S5 Finish, or Architecturally Flat F5 finish.



## Panel Properties

| Product Tolerances to EN14509 |  |
|-------------------------------|--|
| Length                        | ± 10mm   |
| Width                         | ± 2mm  |
| Thickness                     | ± 2mm  |
| Facing Squareness             | ± 2mm  |
| Corners (leg length)          | ± 3mm  |
| Flatness                      | 1.5mm from the theoretical flat plane over a distance of 700mm |
| Joint gap                     | ± 2mm  |

| Thickness and Weights (0.7mm Face/0.5mm Liner) |      |      |      |      |      |      |      |
|--|------|------|------|------|------|------|------|
| Core Thickness (mm)                            | 75   | 100  | 125  | 150  | 175  | 200  | 240  |
| Weight: Lite Core                              | 17.7 | 20.2 | 22.7 | 25.2 | 27.7 | 30.2 | 34.2 |
| Weight: Extra Core                             | 19.2 | 22.2 | 25.2 | 28.2 | 31.2 | 34.2 | 39   |



## Standard Specification

- **600-1200mm module** widths in 1mm increments
- 1100mm maximum module width for export
- 0.7mm thick external steel face, available in a range of colours from the TATA Colorcoat Prisma range as standard. TATA Colorcoat HPS200 Ultra is also available
- Europanel S5 and F5 – **100kg/m<sup>3</sup>** density stone wool **Lite core**
- Europanel S5 Extra / F5 Extra / G12 – **120kg/m<sup>3</sup>** density stone wool **Extra core**
- 0.5mm thick internal steel face, in TATA white polyester lining
- Panels less than 1.8m long can be supplied and are subject to an extra charge
- All panel lengths subject to technical verification

## Technical Properties

| Thermal Performance W/m <sup>2</sup> K |      |      |      |      |      |      |      |
|--|------|------|------|------|------|------|------|
| Core Thickness (mm)                    | 75   | 100  | 125  | 150  | 175  | 200  | 240  |
| U value: Lite Core                     | 0.51 | 0.39 | 0.31 | 0.26 | 0.22 | 0.19 | 0.17 |
| R value: Lite Core                     | 1.96 | 2.56 | 3.23 | 3.85 | 4.55 | 5.26 | 5.88 |
| U value: Extra Core                    | 0.54 | 0.40 | 0.33 | 0.27 | 0.23 | 0.20 | 0.18 |
| R value: Extra Core                    | 1.85 | 2.50 | 3.03 | 3.70 | 4.35 | 5.00 | 5.55 |

Thermal conductivity (λD): Lite Core 0.042 W/mK Extra Core 0.044 W/mK

| Acoustic Performance dB |    |     |     |     |     |     |     |
|-------------------------|----|-----|-----|-----|-----|-----|-----|
| Core Thickness (mm)     | 75 | 100 | 125 | 150 | 175 | 200 | 240 |
| Lite Core               | 31 | 32  | 32  | 33  | 34  | 34  | 34  |
| Extra Core              | 31 | 33  | 33  | 34  | 35  | 36  | 36  |

Span performance is defined by Eurobond Technical Department on a project by project basis. Please contact [panel.technical@eurocladgroup.com](mailto:panel.technical@eurocladgroup.com) for more information.

## Fire Performance

Eurobond panels offer a Euroclass A2-s1,d0 Reaction to Fire when tested and classified to BS EN13501-1 with standard finishes.

Europanel can offer up to 3 hours fire resistance to both insulation and integrity but should be technically verified by Eurobond on a project basis, to the correct standards.